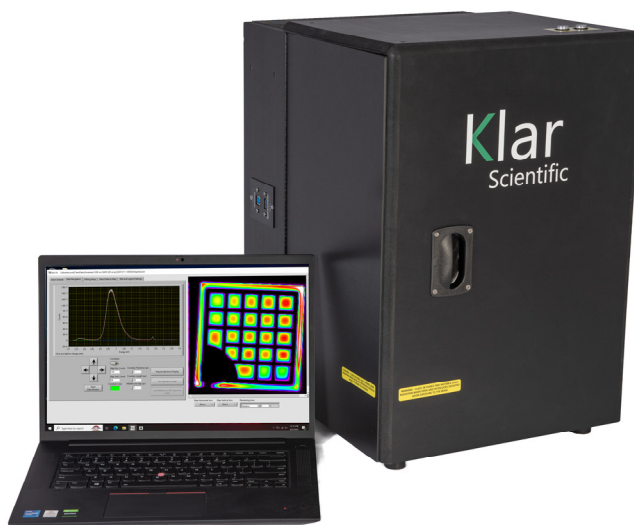
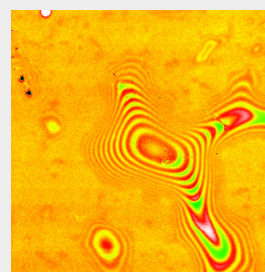
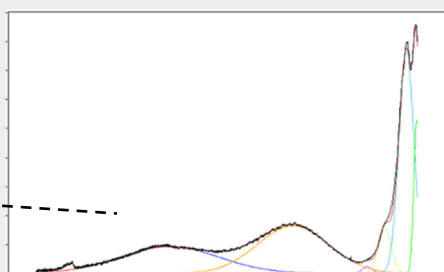
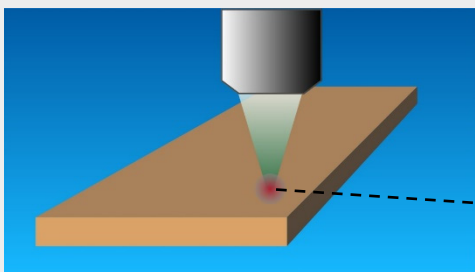
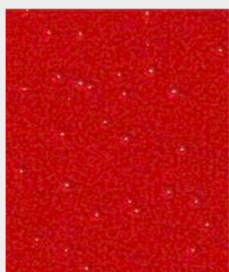
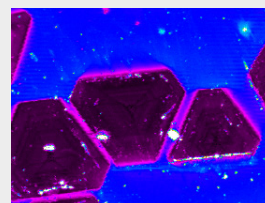


## Klar Mini Pro Microscope

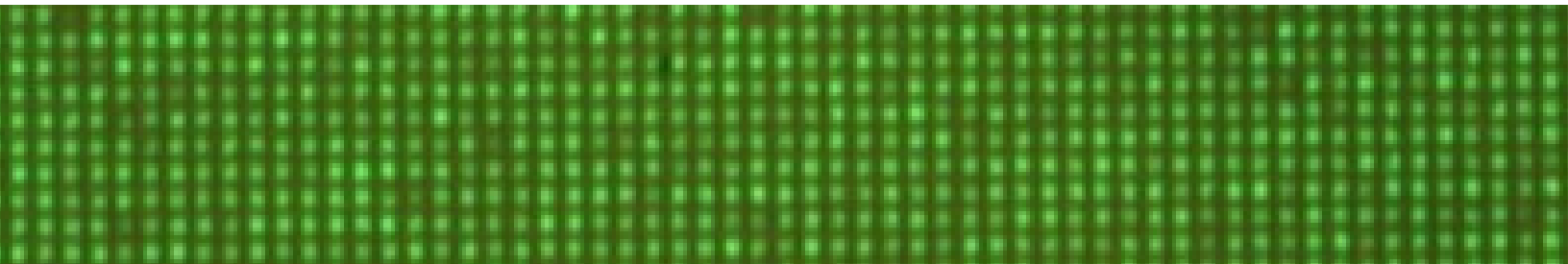
Your personal instrument for photoluminescence (PL) spectroscopy



# Klar

Scientific

**A spectroscopic  
microscope for  
materials analysis**



# PL microscopy – upgradeable to meet your needs

The **Klar Mini Pro** microscope is a compact, affordable instrument designed for scientists who need spectral information with high spatial resolution.

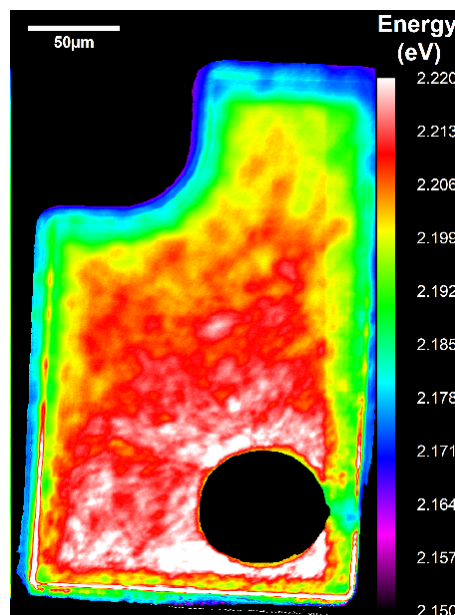
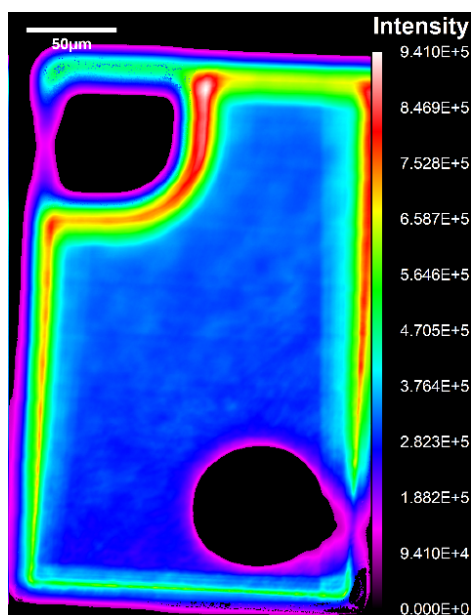
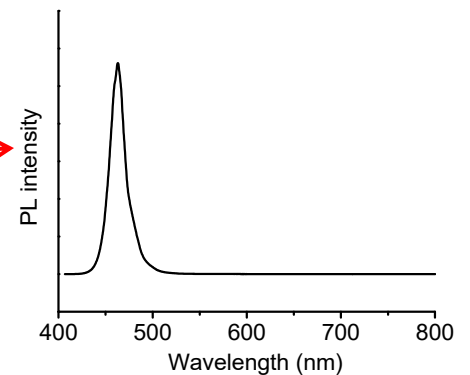
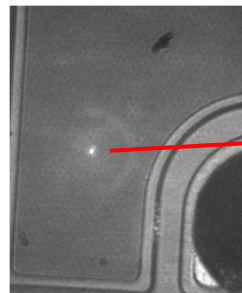
Mini Pro focuses a laser on the sample and a spectrometer collects the emitted light. The sample is scanned and PL spectra are obtained at each  $(x,y)$  point. The objective is adjusted in the  $z$  direction to maintain focus.

*Millions of spectra* can be taken this way. Analysis software rapidly determines the peak energy and intensity for each spectrum. This results in physically meaningful images with outstanding resolution and contrast.

The modular design enables researchers to quickly change wavelength ranges and experimental setups. In addition to PL, the microscope can be easily configured to take Raman and reflectivity spectra.

## Highlights

- Laser excitation 266–980 nm
- PL spectral range 200–1700 nm
- Submicron in-plane resolution
- Millions of spectra can be collected
- Fast peak-fitting software
- Compact (~1 sq ft)
- Enclosure insulates microscope from temperature variations, dust, light
- Affordable



*PL maps of a green LED showing the intensity and peak energy of a defect emission. The measurement was taken through an epoxy bump.*

## Applications

- Defect identification in light-emitting diodes and lasers
- PL mapping of wide-bandgap semiconductors
- Luminescence of 2D materials
- Compositional analysis of semiconductor alloys
- Failure analysis and quality control

# One microscope, many wavelengths



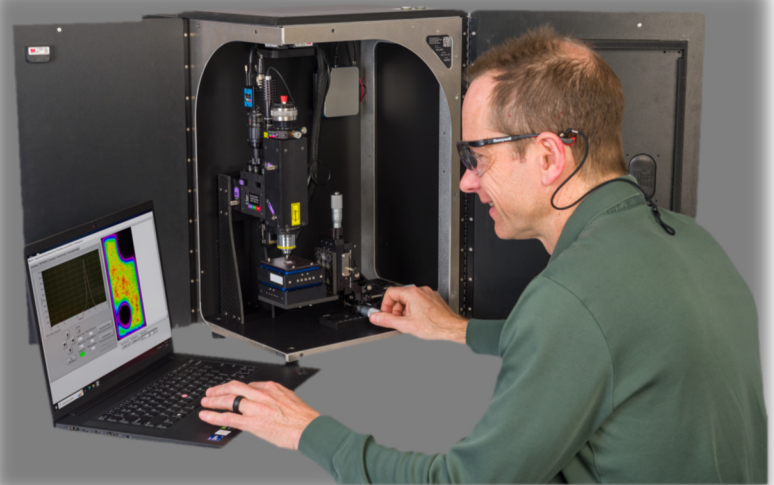
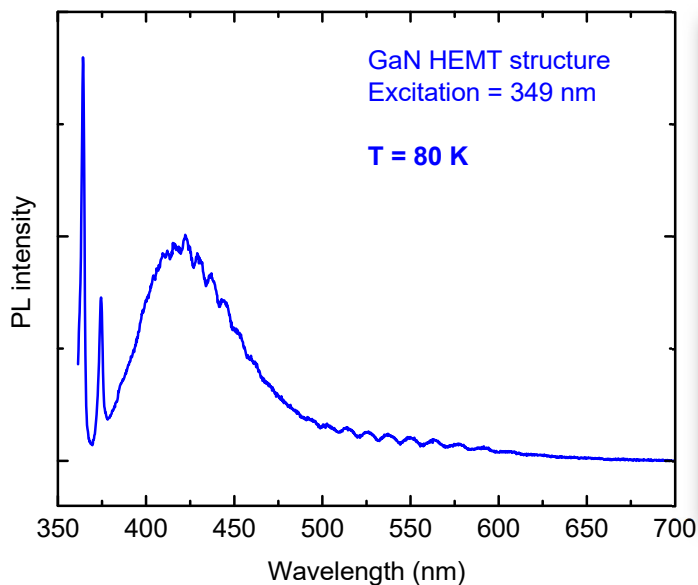
*The Mini Pro's universal optical design allows the owner to expand capabilities with user-replaceable wavelength kits.*



- Spectroscopy from the near-IR to the deep-UV (1700 – 266 nm).
- Change kits in 5 minutes or less.
- Custom kits available – contact us for info.

## Capabilities:

- Photoluminescence
- Raman
- X, Y, Z scanning
- Electroluminescence
- Low temperatures



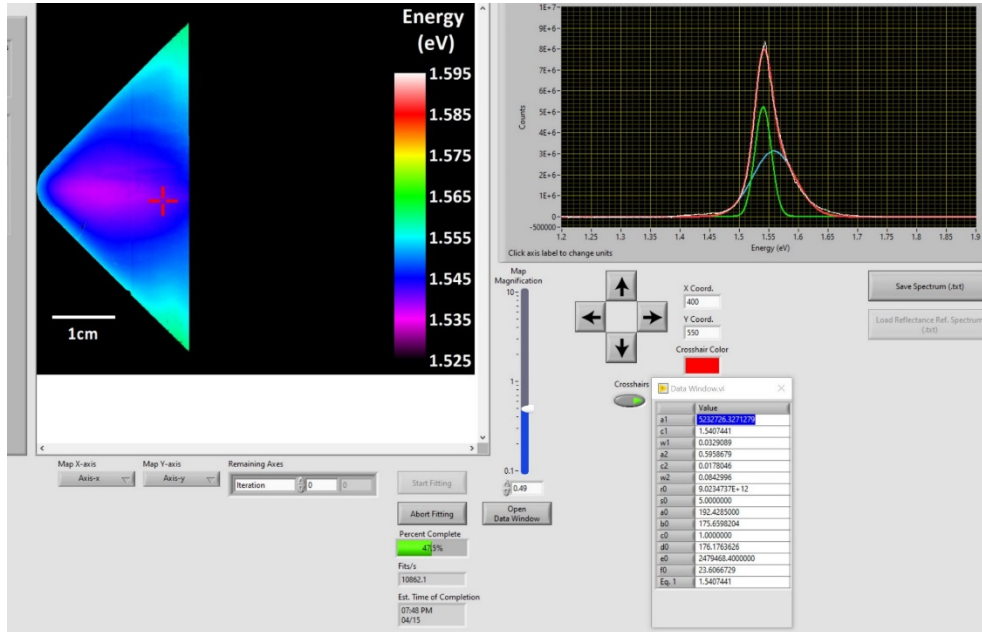
*PL spectrum taken with the low-temperature kit.*



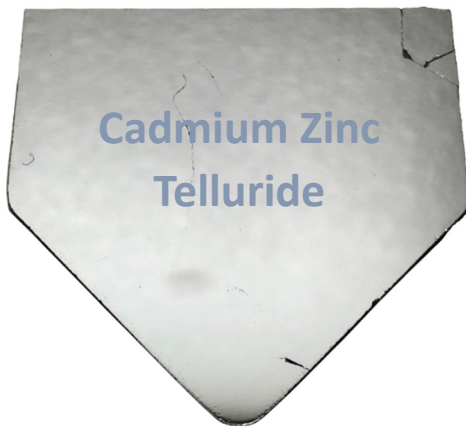
# GPU-accelerated analysis

A PL map consists of lots of data – each  $x,y$  point has a spectrum. **Klar Fit** uses GPU-accelerated peak fitting to analyze spectra quickly. Millions of spectra can be fit in under an hour.

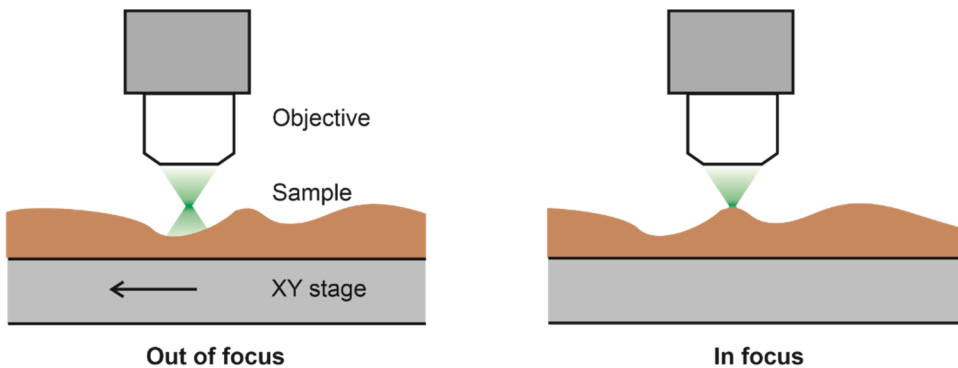
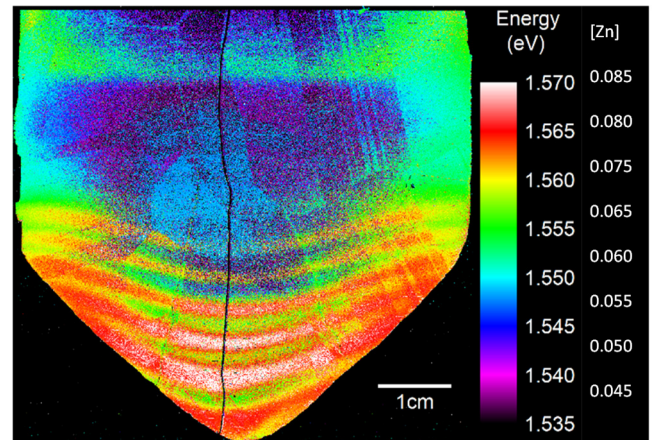
False color image plots a parameter for the selected peak (e.g., energy in eV).



Multiple peaks can be fit with standard or user-defined functions.



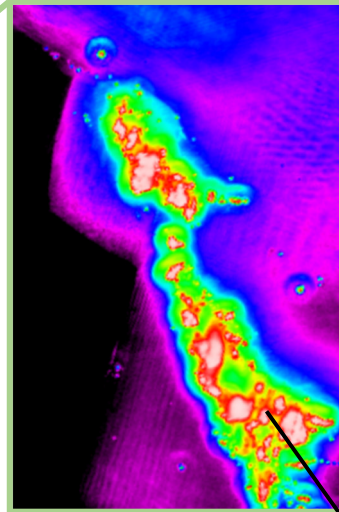
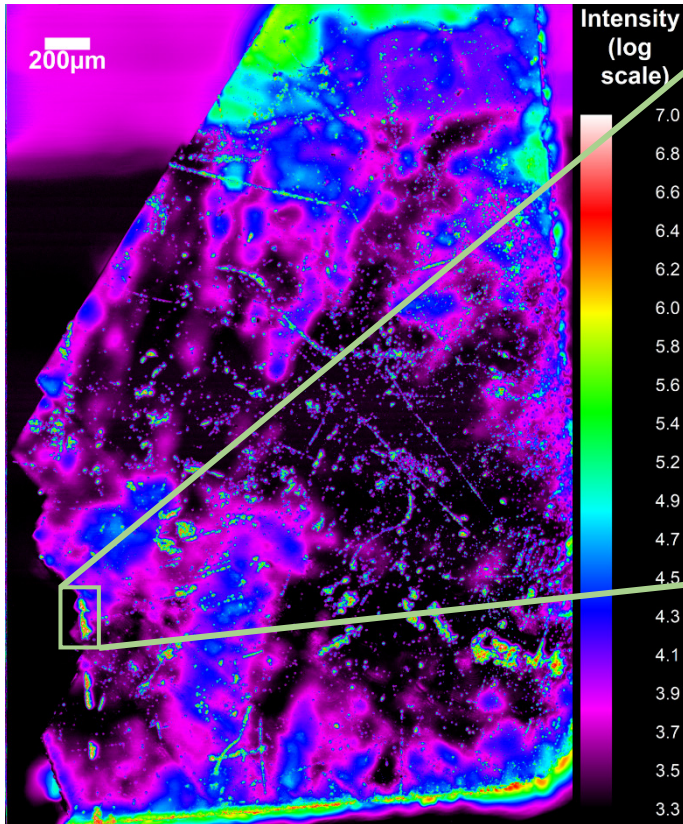
Peak analysis can reveal properties like composition. The figure on the right shows Zn content variations in CdZnTe.



Klar's patented **autofocus** technology keeps the laser spot focused on the sample, even if the surface is rough, tilted, or bowed.

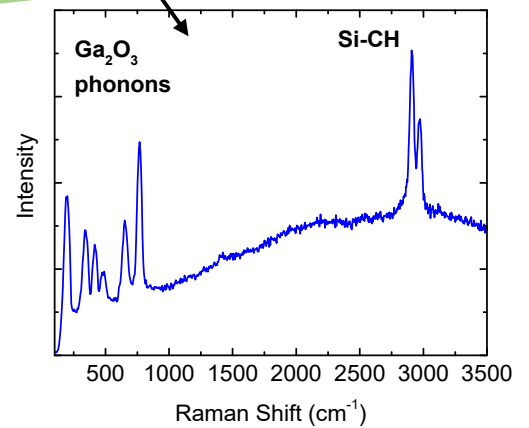
# PL and Raman with the same instrument

Obtain PL or Raman maps with high spatial resolution over a large sample area.

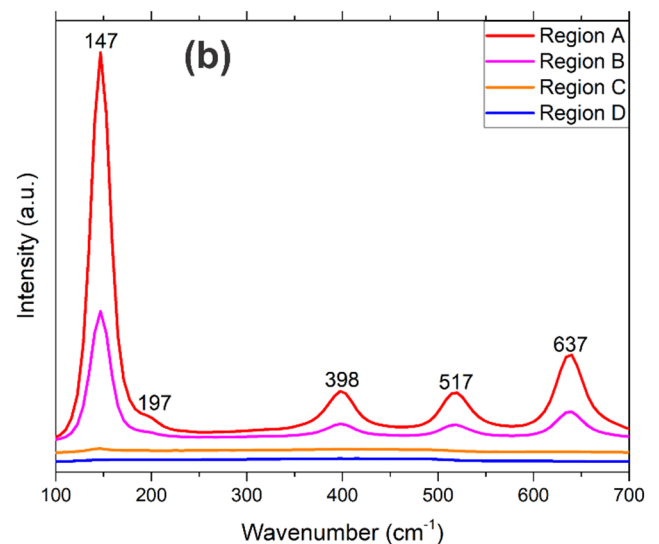
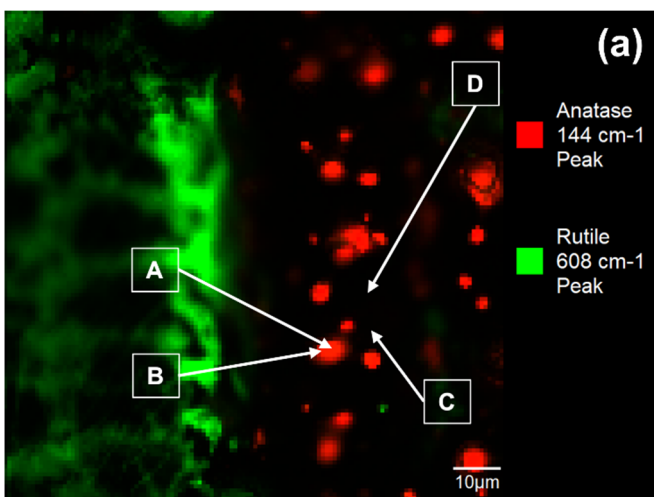


Raman spectroscopy was performed on a UV emitting region and Si-CH contaminants were discovered.

From "Photoluminescence and Raman mapping of  $\beta$ - $\text{Ga}_2\text{O}_3$ ," AIP Advances (2021).

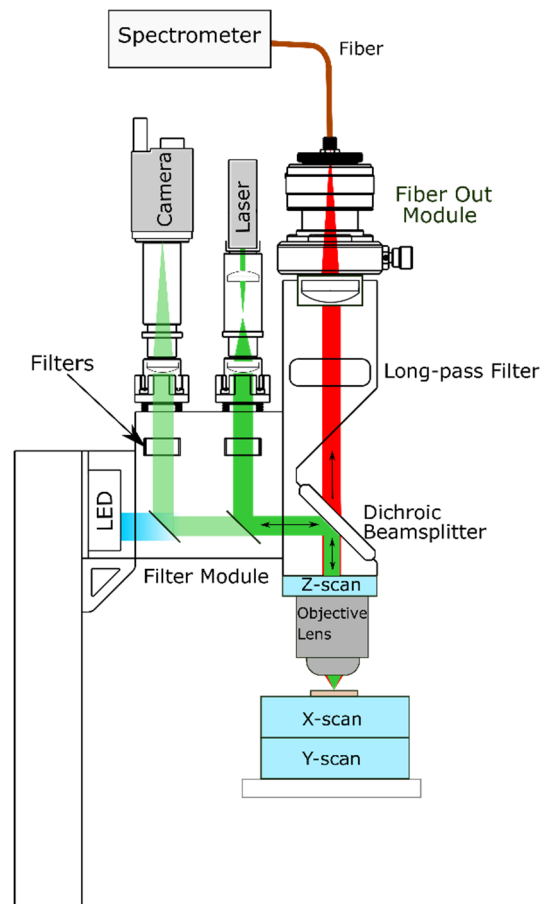


PL mapping revealed defects on gallium oxide. From "Localized UV emitters on the surface of  $\text{Ga}_2\text{O}_3$ ," Scientific Reports (2020).



(a) Raman map of titania with regions of anatase, rutile, and amorphous phases. (b) Raman spectra of selected regions. From "Localized phase transition of  $\text{TiO}_2$  thin films induced by sub-bandgap laser irradiation," J. Vac. Sci. Tech. A (2021).

Specifications	
<b>In-plane resolution (405 nm excitation)</b>	Laser spot radius is 0.35 $\mu\text{m}$ for a 50x, NA 0.75 objective. Collected area is determined by the fiber diameter.
<b>Sample XY scanner</b>	5 or 10 mm travel range, 20 nm repeatability
<b>Objective Z scanner</b>	400 $\mu\text{m}$ travel range, 5 nm repeatability
<b>Acquisition time</b>	At 10 ms integration time per spectrum, 100 $\mu\text{m}$ $\times$ 100 $\mu\text{m}$ , 0.5 $\mu\text{m}$ step size: 6 min 5 mm $\times$ 5 mm, 50 $\mu\text{m}$ step size: 2 min 5 mm $\times$ 5 mm, 5 $\mu\text{m}$ step size: 3 hr
<b>Sample inspection</b>	LED, monochrome camera
<b>Software</b>	Klar Spec acquisition, Klar Fit peak fitting and analysis
<b>Electrical</b>	120 V, 60 Hz input, USB 3.0 data connection
<b>Dimensions and weight</b>	43 cm $\times$ 38 cm $\times$ 58 cm, 14 kg (17 in $\times$ 15 in $\times$ 23 in, 30 lbs)



**Wavelength kits** are supplied as ready-to-use modules that require minimal setup. Custom kits and spectral ranges are available. Ocean spectrometers provide superb sensitivity.

Near IR	
<b>Excitation source</b>	975 nm laser, 30-100 mW
<b>Spectrometer</b>	NIRQuest+, 900-1700 nm

Near IR, Raman	
<b>Excitation source</b>	785 nm laser, 250 mW
<b>Spectrometer</b>	QE Pro, 100-2800 $\text{cm}^{-1}$

Red	
<b>Excitation source</b>	635 nm laser, 1-2 mW
<b>Spectrometer</b>	Maya Pro, 635-1060 nm

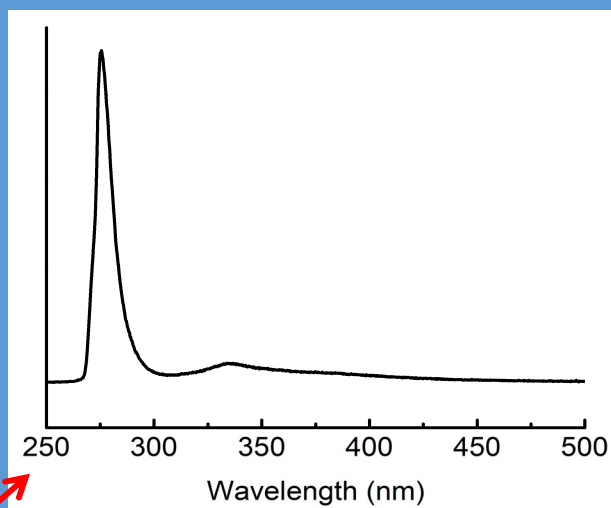
Green	
<b>Excitation source</b>	532 nm laser, 4-5 mW
<b>Spectrometer</b>	Maya Pro, 532-960 nm

Green, Raman	
<b>Excitation source</b>	532 nm laser, 30-140 mW
<b>Spectrometer</b>	QE Pro, 90-4000 $\text{cm}^{-1}$

Violet	
<b>Excitation source</b>	405 nm laser, 1-2 mW
<b>Spectrometer</b>	Maya Pro, 405-840 nm

Near UV	
<b>Excitation source</b>	349 nm laser, 0-20 mW
<b>Spectrometer</b>	Maya Pro, 349-780 nm

Deep UV	
<b>Excitation source</b>	266 nm pulsed laser, 5 mW average power
<b>Spectrometer</b>	Maya Pro, 266-700 nm



**Spectroscopy from near-IR to deep-UV**

# Klar

Scientific

